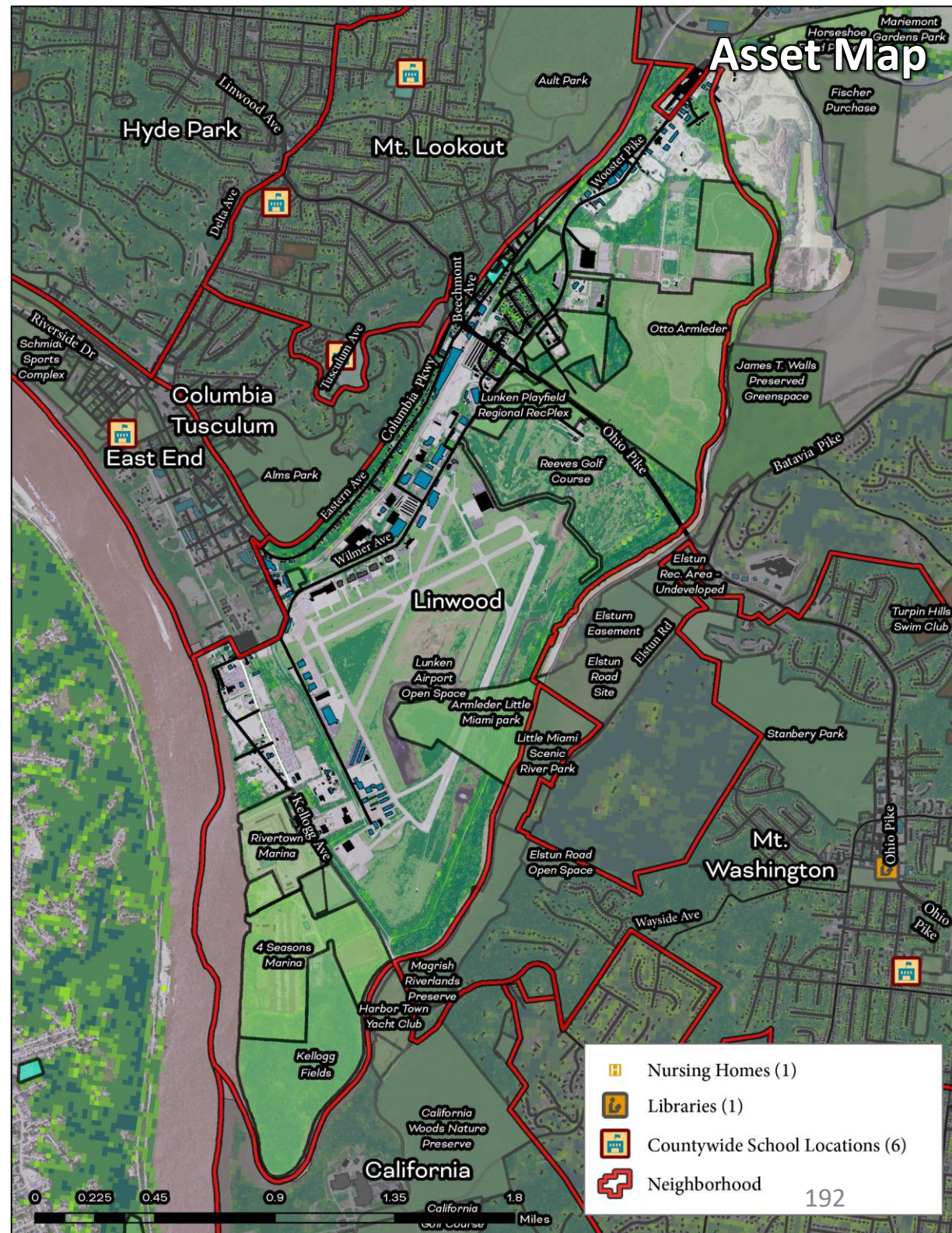


Linwood

Cincinnati Neighborhood Profile

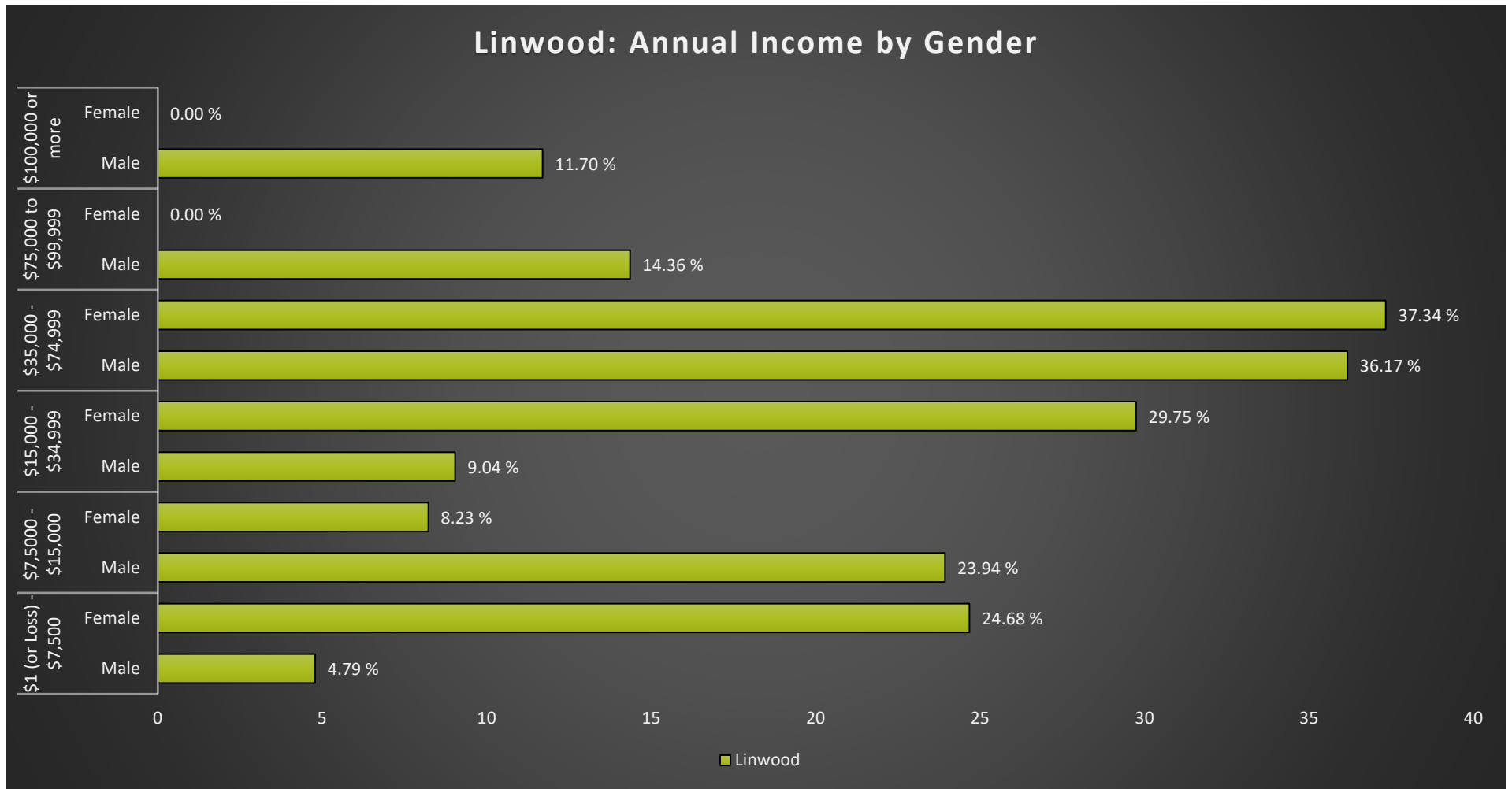
Linwood is a majority white neighborhood (83.5%) with 750 residents and 28% are 17 and under. It has an active community council (Linwood Community Council), a community development corporation (Linwood Community Development Trust), and a community plan (Linwood Neighborhood Strategy (2002)). The average life expectancy for the neighborhood is 66.9 (ranked 45th of all communities assessed). Kennedy Heights has a “high” prevalence of cancer (6.3%) and a large daytime vs. residence population (ranked 46th of all communities assessed).

The neighborhood has ~14.4% tree canopy cover (ranked 34th of all communities assessed) and over 79.5% of the land is parks or greenspace (ranked 2nd of all communities assessed). It has “excellent” access to public transit and “average” walkability. It has “extreme” exposure to ozone concentrations and to Superfund sites. Around 29.7% of Kennedy Heights residents are living in poverty (ranked 30th of all communities assessed).



Linwood

Cincinnati Neighborhood Profile



Linwood Notable Indicators

Average Life Expectancy	% of Land in Parks and Greenspace	Exposure to Traffic
66.9 (ranked 45th for all communities assessed)	79.5%	Extreme

Linwood

Cincinnati Neighborhood Profile

People			
Indicator	Rank	%	# of Persons
Population	-	-	750
Persons over 65	4	4.9%	37
Persons 17 and Under	39	28.0%	210
Children Living w/ Grandparents	41	2.5%	19
Race/Ethnicity:			
Black	-	2.1%	16
white	-	83.5%	626
Asian	-	0.0%	0
Other	-	14.4%	108
Latinx	-	0.0%	0
Persons 5 and Older in Households w/ Limited English Ability	27	0.7%	5

Health			
Indicator	Rank	Value	
Life Expectancy	45	66.9 years	-
Disease Prevalence Estimates:			
	Rank of % w/Condition	% with Condition	Persons with Condition
Asthma	30	12.7%	95
Cancer	35	6.3%	47
Diabetes	19	13.1%	98
Heart Disease	29	8.3%	62
High Blood Pressure	26	36.2%	271
Kidney Disease	22	3.2%	24
Obesity	27	40.4%	303
Lack of Health Insurance	30	14.2%	107
Persons w/ Independent Living Difficulty	28	3.1%	23
Persons Living w/ Disability	20	12.5%	94

Ecosystems and Infrastructure		
Indicator	Rank	Value
Tree Canopy Coverage	34	14.4%
Greenness of Land Surface	27	52.7%
Percent Land in Parks and Greenspaces	2	79.5%
Impervious Surface	14	25%
Heat Island Exposure	15	0.27
Walkability	-	Below Average to Above Average
Persons w/ Low-Income and Low Food Access	31	46.0%
Transit Accessibility	-	Excellent
Daytime Population vs. Resident Population	46	591.2%
Commuters Leaving Each Day	-	299
Commuters Using Public Transit	36	12.7%

Cincinnati Neighborhood Profile

Socio-Economic Indicators			
Indicator	Rank	%	#
Persons Living in Poverty	30	29.7%	223
SNAP Recipient Households	29	27.2%	73
Educational Attainment:			
Less than High School	-	13.7%	-
HS or Equivalent	-	19.2%	-
Some College	-	10.0%	-
Associate's Degree	-	3.6%	-
Bachelor's Degree or Higher	-	12.1%	-
Educational Attainment Index	37	0.31	-
Extreme Housing Burdens:			
Renter-Occupied Housing (as % of All Housing Units)	36	73.9%	198
Renters Spending 30% of Income or More on Rent + Utilities	13	20.5%	55
Renters Spending 50% of Income or More on Rent + Utilities	18	10.1%	27
Homeowners Spending 30% of Income or More on Mortgage + Utilities	39	25.7%	18
Average Energy Costs (as % of Income)	18	3.6%	-
Persons without Vehicle Access	35	11.6%	125

Built Environmental Hazards		
Indicator	Relative Exposure Level	Value
Traffic Exposure	Extreme	-
Potential Lead Paint Exposure (Houses Built pre-1960)	Extreme	89.16%
Cancer Risk from Air Pollution	Moderate	-
Respiratory Disease Risk from Air Pollution	Moderate	-
Proximity to Water Pollution Sources	Low	-
PM2.5 Levels in Air, µg/m3	Low	9.59
Ozone Concentration, ppb	High	46.65
Diesel Particulate in Air, µg/m3	Low	0.72
Proximity to Superfund Sites	High	-
Proximity to Potentially Toxic Industrial Activity	Low	-
Proximity to Hazardous Waste Treatment and Disposal Facilities	Low	-

Neighborhood Planning	
Indicator	Description
Community Councils	Linwood Community Council
Community Development Corporations	Linwood Community Development Trust
Community Plans	Linwood Neighborhood Strategy (2002)